



# BOA



• 41Tonnes Bollard Pull

## BOA BIRK

ASD Harbour/Towage/Salvage Tug



## General Information

Vessel's name	BOA BIRK
Call sign	JXVY
Owner	Boa Tugs AS
Manager	Boa Management AS
Type	ASD Tug
Design	Ulupinar X
Year built	2010
Builder	Sanmar
Place built	Turkey
IMO number	9586239
Flag	NOR
Port of Registry	Trondheim
Class society	BV
Class Notation	R1 FF3WS Tug

## Main Particulars

Length Overall	24.39 m
Length pp	22 m
Breadth moulded	9.15 m
Depth moulded	4.04 m
Max. Draught	4.50 m
Gross tonnage	199 t
Net tonnage	59 t

## Performance

Service speed	10 knots
Maximum speed	13 knots
Consumption service	3.2 m <sup>3</sup> /day (approx.)
Type of fuel	Marine Gas Oil
Bollard pull	41 t

## Main Engines & Propulsion

Main engines	2 x CAT 3512-BX
Output	2460kW
Auxiliary engines	2xPerkins4.4TWGM67kW/1500rpm
Generators	2xPerkinsB4.4TWGM67kW/1500rpm
Propellers	2 x Rolls Royce us 155/2620 rpm

## Radio & Navigation Equipment

Radar	Koden MDC 2.900P, XBand
Echo Sounder	Jmc F-3000W
1 x GPS Compass	1 x Koden KGC-1 1 x SIMRAD J3007
Magnetic Compass	Cassens Reflecta 3
Autopilot	NautoPilot NP60
DGPS Navigator	Samyung SPR-1400

AIS	Samyung SI-30A
ECDIS (double)	Tecdis

## Deck Equipment

Towing winch aft	Single drum
Main with towing wire	600 m/40 mm
Break capacity	130 t
Operated locally and from wheelhouse	
Towing winch fwd	Single drum
Dynema fiber rope	TBD
Break capacity	TBD
Slow pulling	23 t on 11m/min
Fast pulling	6 t on 38 m/min
Operated locally and from wheelhouse	

## Anchor Handling Equipment

Towing pins	
Deck crane	PK11001 MAS 1.3

## Capacities

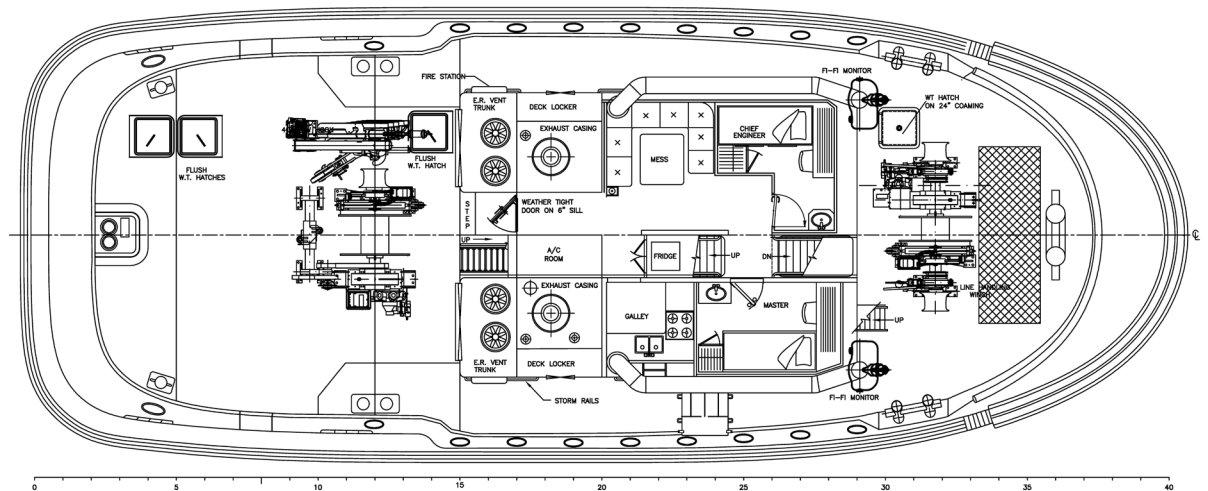
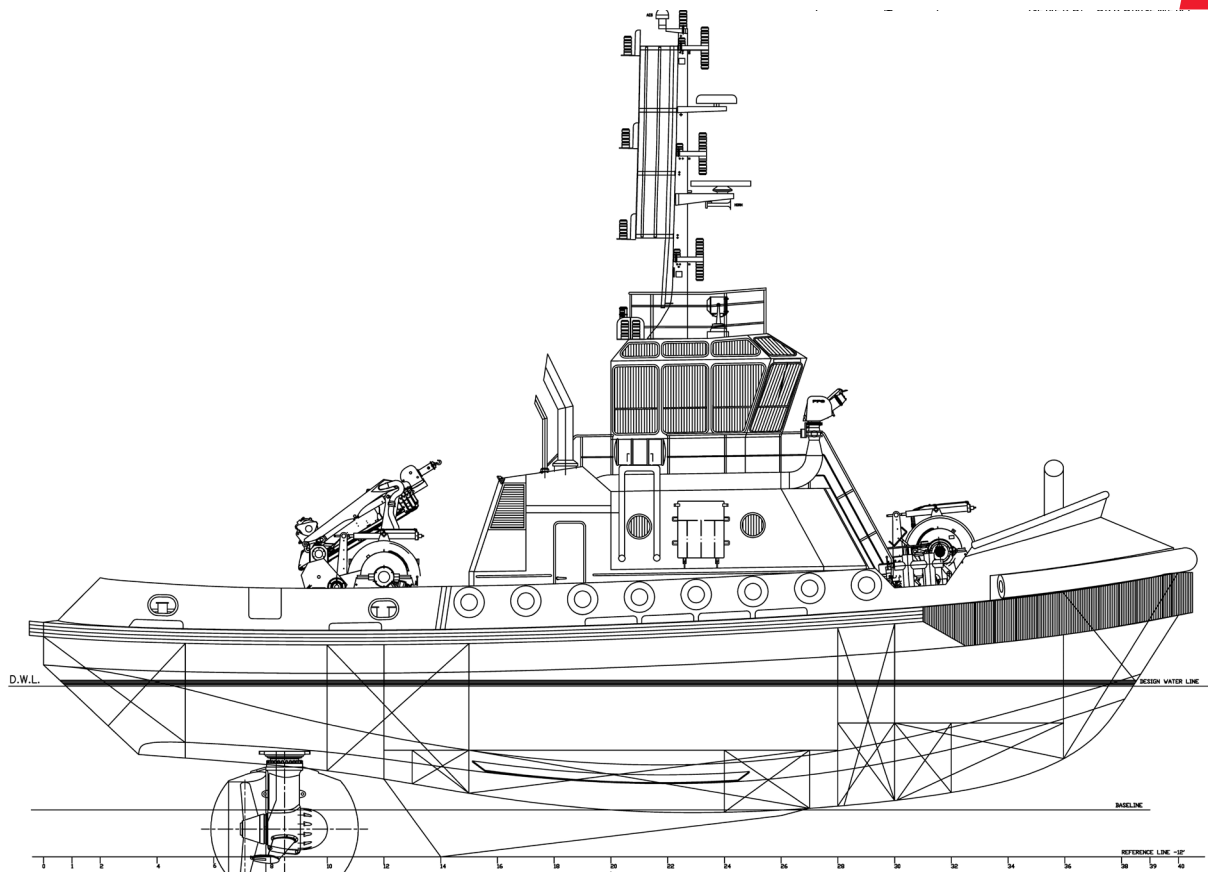
Accommodation	6 persons
Cargo deck	
Length	3.5 m
Breadth	7 m
Clear area	24.5 m <sup>2</sup>
Tank Capacity	
Fuel oil	73 m <sup>3</sup>
Fresh water	18 m <sup>3</sup>
Liquid foam	12 m <sup>3</sup>
Waste oil	2 m <sup>3</sup>
Oily water	2.7 m <sup>3</sup>
Sewage	2 m <sup>3</sup>

## Rescue and Life Saving Equipment

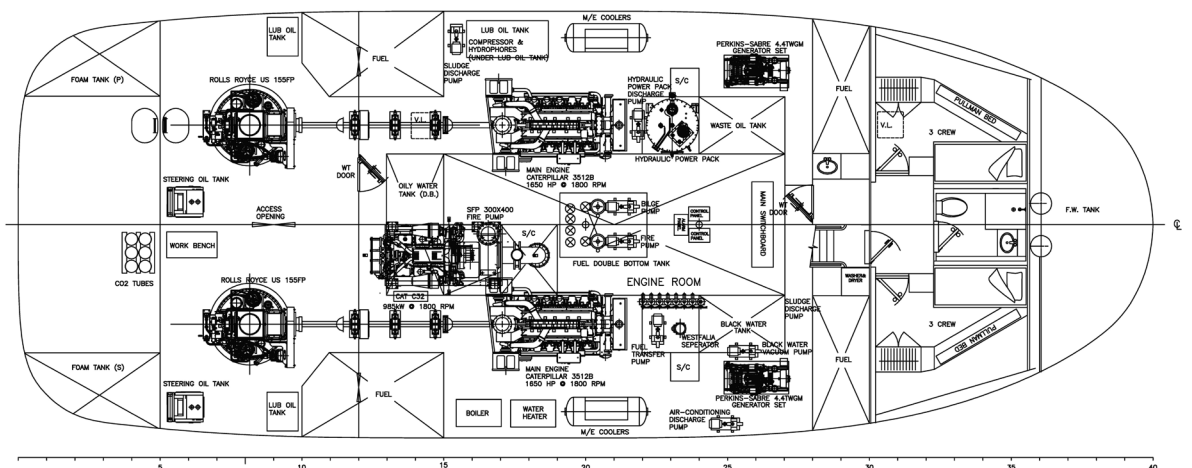
According to SOLAS and safe manning certificate

## Safety & Salvage Equipment

Internal fire-fighting	Fully complies with SOLAS requirement
CO2 fire-fighting system for engine room	
External fire-fighting	FIFI 1
Fire monitor	1 each foam/water pr monitors 1200 m <sup>3</sup> /hr 9 bars 120m throw length - 50 m with foam



MAIN DECK PLAN



HOLD PLAN



#### CORPORATE HEADQUARTERS

BOA Management AS  
Strandveien 43  
7067 Trondheim  
Norway  
+47 73 99 11 99  
tugs@boa.no

[www.boa.no](http://www.boa.no)