



BOA



- Submersible to 8 m forward / 12 m aft above deck
- Launching of Jackets up to 3,500 t
- Heavy cargo up to 17,500 t
- Voluminous cargo up to 3,600 m³
- Extreme deck strength of 31 t/m²

BOABARGE **29/30/35/36**

Semi Submersible Heavy Lift and Launching
Cargo Barges



BOABARGE 29/30/35/36

General Information

| | |
|------------------|--|
| Vessel's Name | BOABARGE 29, BOABARGE 30 BOABARGE 35, BOABARGE 36 |
| Flag | Norwegian, NOR |
| Port of Registry | Trondheim |
| Call Sign | BB29: LK9945, BB30: LK9946 BB35: LG3026, BB36: LG3025 |
| Class Society | DnV |
| Class Notation | @ 1A1 Barge for Deck Cargo (DK+) |
| Type | Heavy Lift and Semi Submersible Ocean Going Heavy Deck Cargo Barges |
| Year built | BB29: 2007, BB30/35: 2008, BB36: 2009 |
| Builder | Nanjing Wujiazui Shipbuilding Co. Ltd. |
| Place built | Nanjing, China |
| Owner | Boa Barges AS |
| Manager | Boa Management AS |

Dimensions

| | |
|-------------------------|---------|
| Length, Overall | 124 m |
| Breadth, moulded | 31.5 m |
| Depth, moulded | 7.93 m |
| Draught, fully loaded | 6.076 m |
| Web Frame Spacing | 2 m |
| Long. Stiffener Spacing | 0.61 m |
| Gross tonnage | 8,762 |
| Net tonnage | 2,629 |

Tonnage

| | |
|--------------------|--|
| Deadweight | BB29: 17,480 t, BB30: 17,440 t BB35: 17,510 t, BB36: 17,300 t |
| Deck space | 3,600 m ² |
| Deck strength | 31.5 t/m ² |
| Launching capacity | up to 5,000 t jacket |

Submerging Depths

| | |
|---|---|
| Submerging (without floatation tanks) when grounding at stern | 8 m above deck fwd 12 m above deck aft |
| Submerging (free floating) with 10m high floatation tanks positioned aft on main deck | 8 m above deck fwd 8 m above deck aft |
| Floatation tanks for free floating | LxBxH: 12 m x 6.1 m x 10 m |

Tank Capacities

| | |
|-----------------|-----------------------|
| Ballast tanks | 26,770 m ³ |
| Bilge tanks | 34 m ³ |
| Sewage | 7.7 m ³ |
| Fresh water | 15.2 m ³ |
| Fuel (MDO) | 44.2 m ³ |
| Lub. oil store | 0.6 m ³ |
| Hydr. oil store | 1.3 m ³ |
| Misc. oil store | 0.6 m ³ |

Ballast System

| | |
|---|------------------------------|
| Ballast Pumps (Diesel Driven) | 2 x 3,000 m ³ /hr |
| Ballast Pumps (Electric Driven) | 1 x 750 m ³ /hr |
| Service Pump (Electric Driven) | 1 x 250 m ³ /hr |
| Ballast Tanks | 24 in pontoon |
| Remote operated pumps, valves and sounding system from control room | |
| Ejector stripping system for all ballast tanks | |

Power Supply

| | |
|-------------------------|--|
| Main Generators | 2 x 269 kVA, 440 V, 60 Hz 1 x 145 kVA, 440 V, 60 Hz |
| Work Generator | 1 x 22 kVA (1 x 30 Kw), 440 V, 60 Hz |
| Shore Power Connections | 230 V and 440 V |

Anchor & Mooring Equipment

| | |
|-----------------|--|
| Anchor Winch | 1 hydraulic driven |
| Anchor | 1 HPP anchor, 4,500 kg, 355 m x Ø 58 mm K3 chain |
| Work Winches | 2 x double drum on winch deck |
| Rope Capacities | 220 m x 40 mm (721.8 ft x 1.57 in) 150 m x 60 mm (492.1 ft x 2.36 in) |
| Capstans | 3 x 12 t pull |
| Bollards | Size 250/400 |

Towing Equipment

| | |
|------------------|--|
| Towing Bridle | 1 bridle, 2 x 20 m legs, tow plate and 9 m long fore runner |
| Bridle Chain | 66 mm K3, MBL 330 t, Max bollard pull 150 t |
| Recovery System | A-frame and recovery winch with chain on main deck forward |
| Emergency Towing | Towing wire installed along port side Length 134 m, MBL 330 t |
| Towing brackets | 3 fwd 500 t MBL |

Navigational Lights and Safety Equipment

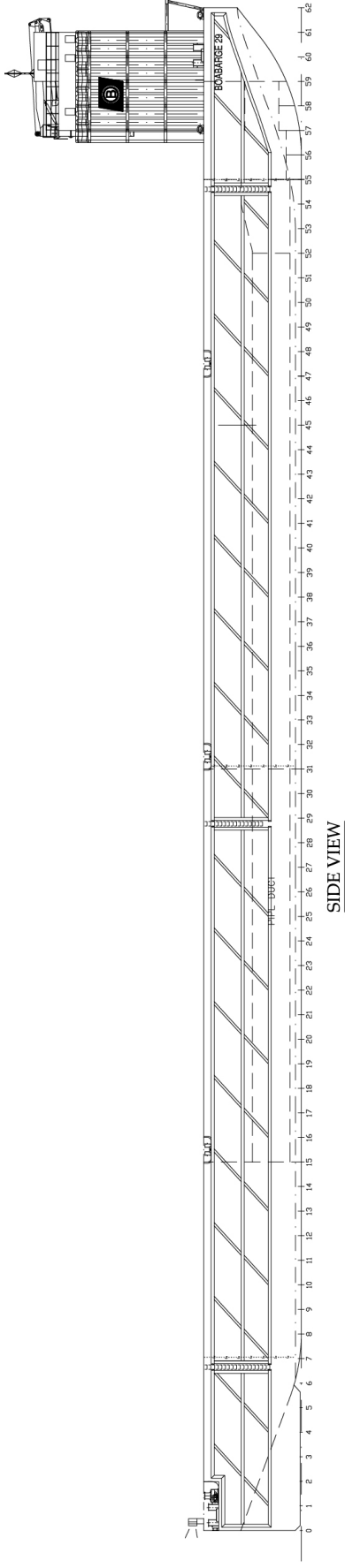
The barge is equipped with navigation lights according to flag state rules. The system is electrically powered and installed with solar panels. Safety equipment according to rules is always kept onboard.

Fuel Oil Tank

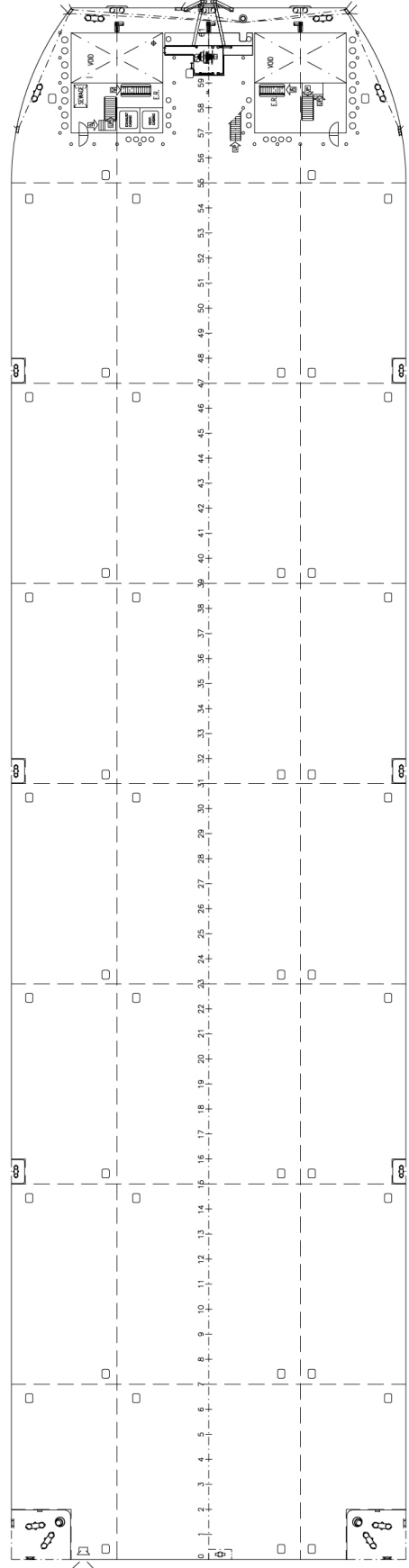
A fuel oil storage tank with a capacity 38,9 m³ and a fuel oil day tank with capacity 5,2 m³ are located in the pump room. A screw pump with capacity 16,5 m³/hour is installed for fuel transfer.

Accommodation

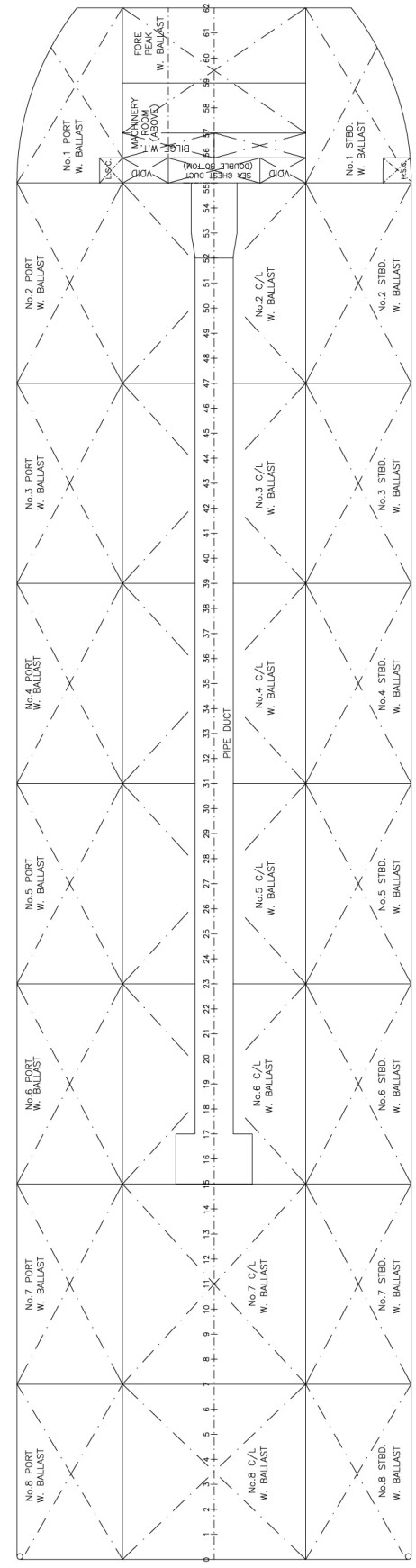
| | |
|----------------|---------|
| Accommodations | 12 beds |
| Day Room | 1 |
| Meeting Room | 1 |



SIDE VIEW



DECK LEVEL VIEW



HORIZONTAL SECTION IN TANKS
1100 ABOVE BASE LINE



CORPORATE HEADQUARTERS

BOA Management AS
Strandveien 43
7067 Trondheim
Norway
+47 73 99 11 99
chartering@boa.no

www.boa.no