



BOA



- Hull design for improved towing speed and consumption
- Complete flush deck
- Heavy cargo up to 2970 t
- Voluminous cargo up to 1120 m³
- Deck strength of 12t/m²

BOABARGE

32/42

Heavy deck cargo barge



BOABARGE 32/42

General Information

Vessel's Name	BOABARGE 32/42
Flag	Norwegian, NOR
Port of Registry	Trondheim
Call Sign	BB32 LK9948 BB42 LG3023
Class Society	DNV GL
Class Notations	1A1
Year built	2008
Builder	Wujiazui Shipbuilding Co. Ltd.
Place built	Nanjing, China
Owner	Boa Tugs AS
Manager	Boa Management AS

Dimensions

Length, Overall	65.00 m
Breadth, moulded	17.25 m
Depth, moulded	4.00 m
Draught, fully loaded	3.137 m
Deck space	1120 m ²
WEB Frame Spacing	0.625 m
Gross tonnage	1159
Net tonnage	345

Cargo Capacities

Deadweight (T = 3.137 m)	2790 t
Deck strength	12 t/m ²

Ballast System

Tanks	15 x ballast tanks Transv. bhd: 4 Long. bhd: 2
-------	--

Towing & Mooring Equipment

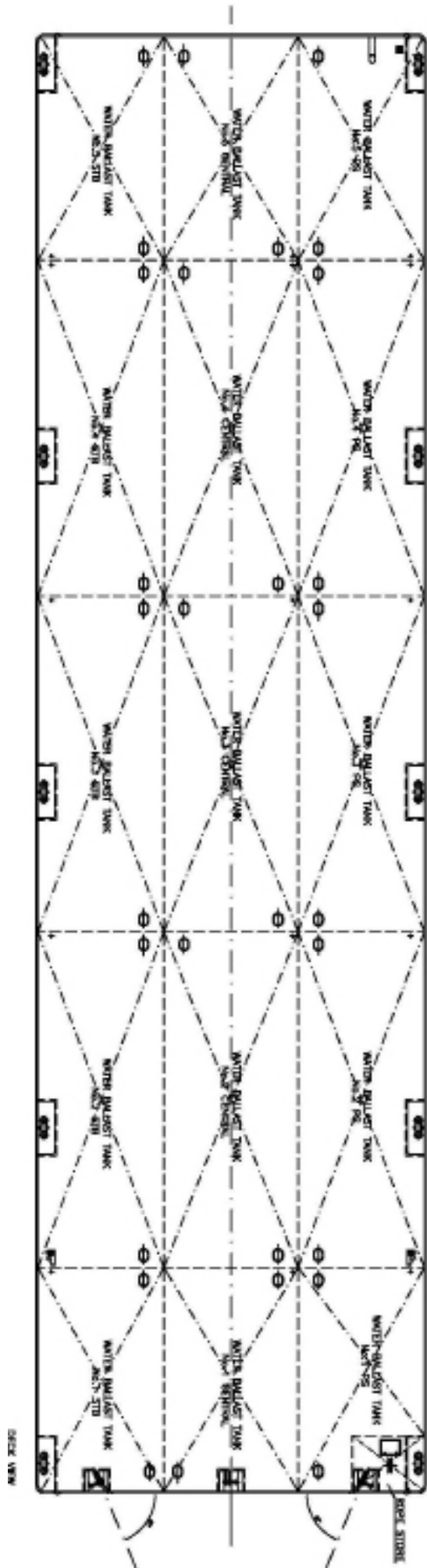
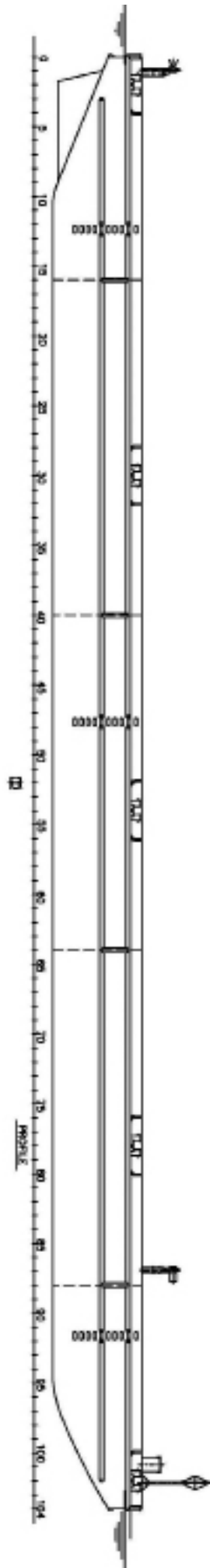
Smit Brackets	Two Smit brackets, breaking load 250 tonnes.
---------------	--

Towing Bridle	One towing bridle made up of 56 mm dia. NVK2 chain (2 m)
---------------	---

Emergency Towing	One Smit bracket, breaking load 250 tonnes. 2m of 56 mm dia. chain, 70 m of 54 mm dia. wire running along port side of barge, MBL 1970 kN.
------------------	--

Bollards	10 recessed double bollards, 5 each side, NS2584, size 250. Mooring capacity: 2 x 130 kN each Towing capacity: 1 x 365 kN each
----------	--







CORPORATE HEADQUARTERS

BOA Management AS
Strandveien 43
7067 Trondheim
Norway
+47 73 99 11 99
tugs@boa.no

www.boa.no