



# BOA



• 17 tonnes Bollard Pull

## CHIEF

Coastal Towsages/Harbour Assistance/  
Salvage



## General Information

|                  |                                   |
|------------------|-----------------------------------|
| Vessel's name    | CHIEF                             |
| Call sign        | LIMG                              |
| Owner            | Boa Shipping AS                   |
| Manager          | Boa Management AS                 |
| Type             | Conventional Tug                  |
| Year built       | 1979                              |
| Builder          | Flekkefjord Slipp & Maskinfabrikk |
| Place built      | Flekkefjord, Norway               |
| IMO number       |                                   |
| Flag             | NOR                               |
| Port of Registry | Trondheim                         |
| Class society    | DNV-GL                            |
| Class Notation   | +1A1 Tug Ice C                    |

## Main Particulars

|                |       |
|----------------|-------|
| Length Overall | 19 m  |
| Breadth max.   | 7 m   |
| Max. Draught   | 4.8 m |
| Gross tonnage  | 98,71 |
| Net tonnage    |       |

## Performance

|                     |                |
|---------------------|----------------|
| Service speed       | 10 knots       |
| Maximum speed       | 11 knots       |
| Consumption service |                |
| Type of fuel        | Marine Gas Oil |
| Bollard pull        | 17 t           |

## Main Engines & Propulsion

|                   |   |
|-------------------|---|
| Main engines      | 1 x Caterpillar, type D-399 TEK   |
| Output            | 749 kW at 1,200 rpm   |
| Auxiliary engines | 1 x Nogva Deere 4045<br>TFM, 71 kW at 1,500 rpm<br>1 x Perkins 35 kW at 1,500 rpm |
| Generators        | 1 x UCM 224 F2 46 kW 50 Hz<br>1 x Stamford MC 234C 28 kW 50 Hz                    |
| Propellers        | Variable pitch propeller in nozzle  |
| Bow thruster      | 1 x Brunvoll 110 kW<br>SPO-150  |

## Radio & Navigation Equipment

|                  |                           |
|------------------|---------------------------|
| Radar 1          | 1 x Kelvin Hughes (96 nm) |
| Radar 2          | 1 x Furuno (48 nm)        |
| GPS 1            | 1 x Shipmate              |
| GPS 2            | 1 x JCV                   |
| Echo Sounder     | 1 x Koden CVS             |
| Magnetic Compass | 1 x Anschütz              |
| Autopilot        | 1 x Anschütz              |

|              |              |
|--------------|--------------|
| AIS          | 1 x JCV      |
| Autopilot    | 1 x Anschütz |
| Chartplotter | 1 x Telchart |

## Deck Equipment

|                |   |
|----------------|---|
| Deck Crane     | 1 x Palfinger<br>Max. lift capacity 3150 kg<br>Max. radius 7,7 m/970 kg |
| Portable Pumps | 3 with a total capacity of 206 m <sup>3</sup> /hr                       |

## Towing Equipment

|             |  |
|-------------|--|
| Towing Hook | 1  |
|             | Necessary towing equipment stored on board |

## Capacities

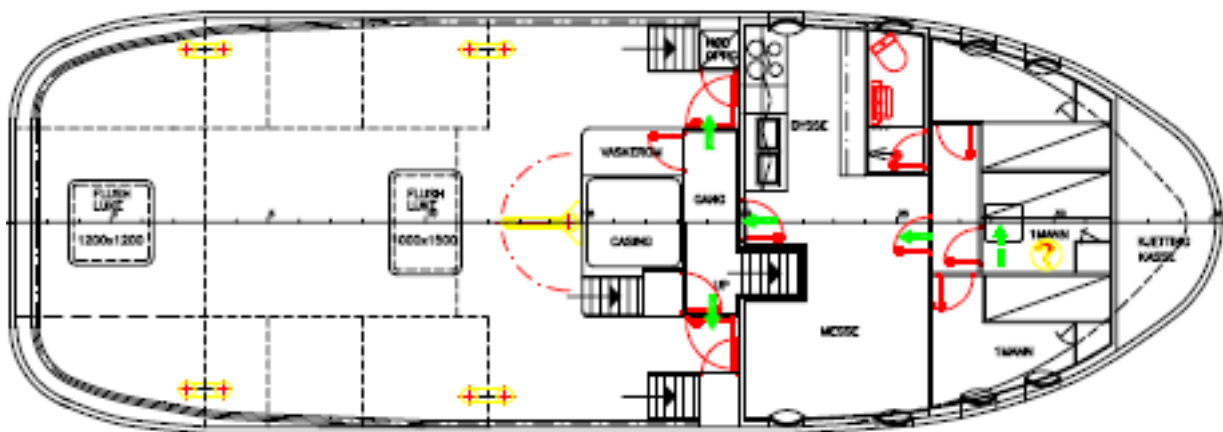
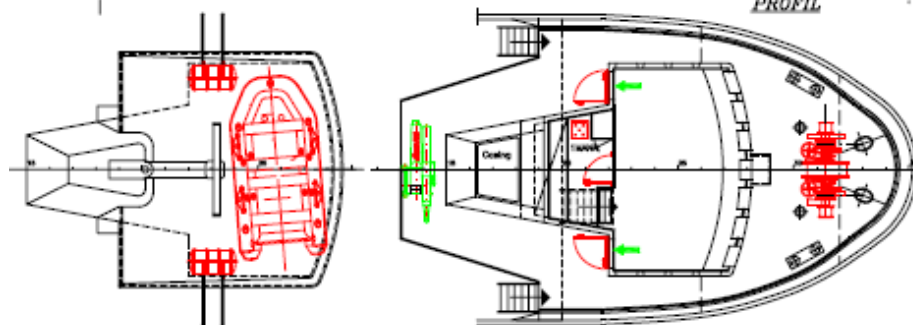
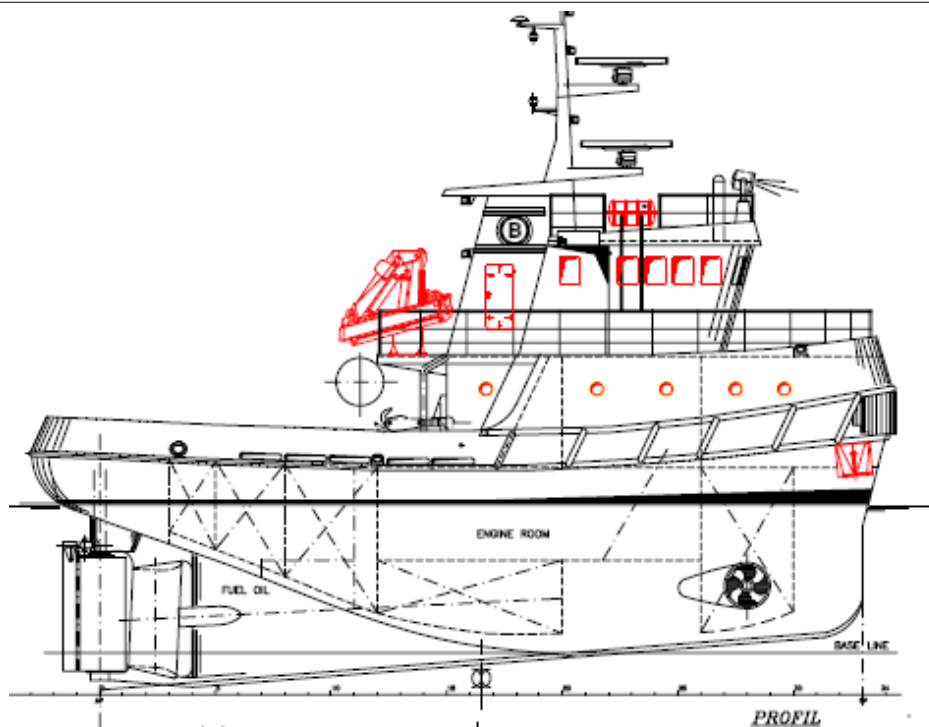
|               |           |
|---------------|-----------|
| Accommodation | 5 persons |
|---------------|-----------|

## Tank Capacity

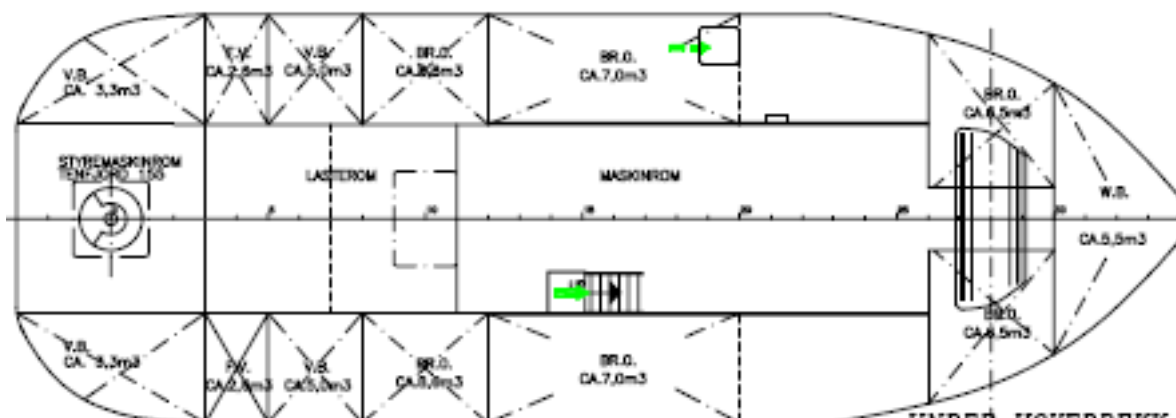
|             |                    |
|-------------|--------------------|
| Fuel oil    | 43 m <sup>3</sup>  |
| Fresh water | 5,2 m <sup>3</sup> |
| Sea Water   | 22 m <sup>3</sup>  |

## Rescue & Life Saving Equipment

According to SOLAS and safe manning certificate



**HOVEDDEKK**



**UNDER HOVEDDEKK**



#### **CORPORATE HEADQUARTERS**

##### **BOA Management AS**

Strandveien 43  
7067 Trondheim  
Norway  
+47 73 99 11 99  
tugs@boa.no

[www.boa.no](http://www.boa.no)