



# BOA



- Submersible to 12.5 m forward / 16.7 m aft above deck
- Launching of jackets up to 10,000 t
- Heavy cargo up to 30,000 t
- Voluminous cargo up to 5,150 m<sup>3</sup>
- Extreme deck strength of 35 t/m<sup>2</sup>
- Ballast water treatment system
- Ice Class ICE-C

## **BOABARGE 37**

Semi Submersible Heavy Lift and  
Launching Cargo Barge



# BOABARGE 37

## General Information

Vessel's Name	BOABARGE 37
Flag	Norwegian, NOR
Port of Registry	Trondheim
Call Sign	LG8610
Class Society	DNV
Class Notations	+1A1 ICE-C DK(+) DAT(-10)C 'Barge for Deck Cargo'
Year built	2015
Builder	PRC
Place built	PRC
Owner	Boa Barges AS
Manager	Boa Management AS

## Dimensions

Length, Overall	152 m (498.7 ft)
Breadth, Moulded	38 m (124.7 ft)
Depth, Moulded	9.15 m (30 ft)
Draught - Max	6.92 m (22.7 ft)
Draught - Min	1.50 m (4.9 ft)
Air Draught (from keel to top of mast)	29.95 m (98.3 ft)
Web Frame Spacing	2 m (6.6 ft)
Long. Stiffener Spacing	0.61 m (2.0 ft)
Gross Tonnage	15,185 t
Net Tonnage	4,555 t

## Cargo Capacities

Deadweight (T = 6.920 m)	29,500
Deck space	5,150 m <sup>2</sup>
Deck strength	35 t/m <sup>2</sup>
Launching Capacity	up to 10,000 t jacket

## Submerging Depth

Submerging (Without floatation tanks) when grounding at stern	12.5 m (41 ft) above deck fwd 16.7 m (54.8 ft) above deck aft
Submerging (free floating) with 15 m (49.2 ft) high floatation tanks positioned aft on main deck	12.5 m (41 ft) above deck fwd 13.0 m (42.6 ft) above deck aft
2 additional floating tanks for free floating submerging operations	LxBxH: 20 m x 4.575 m x 15 m

## Tank Capacities

Ballast tanks	46,000 m <sup>3</sup>
Bilge tanks	35 m <sup>3</sup>
Sewage	14.8 m <sup>3</sup>
Fresh water	25 m <sup>3</sup>
Fuel (MDO)	45 m <sup>3</sup>
Lub. Oil Store	0.64 m <sup>3</sup>
Hydr. Oil Store	1.28 m <sup>3</sup>
Misc. Oil Store	0.64 m <sup>3</sup>

## Ballast System

Ballast Pumps (Diesel Driven)	2 x 5,200 m <sup>3</sup> /hr
Ballast Pumps (Electric Driven)	2 x 750 m <sup>3</sup> /hr
Service Pump (Electric Driven)	1 x 900 m <sup>3</sup> /hr
Ballast Tanks	27 in pontoon, 2 in deckhouse
Remote operated pumps, valves and sounding system from control room	
Ejector stripping system for all ballast tanks	

## Power Supply

Main Generators	2 x 310 kVA (2 x 248 Kw), 440 V, 60 Hz 1 x 210 kVA (1 x 168 Kw), 440 V, 60 Hz
Work Generator	1 x 37 kVA (1 x 30 Kw), 440 V, 60 Hz
Equipment on deck	230 V and 440 V
Shore Power Connections	230 V and 440 V

## Anchor & Mooring Equipment

Anchor Winches	2 x hydraulic winches
Anchors	2 x SPEK 6900 kg, 2 x 330 m x 64 mm K3
Capstans	3 x 12 t pull
Work Winches	2 x double drum on winch deck
Rope Capacities	220 m x 40 mm (721.8 ft x 1.57 in) 150 m x 60 mm (492.1 ft x 2.36 in)
Bollards	Size 500, Capacity SWL 100 t

## Towing Equipment

Towing Bridle	Each legs 26.5 m (87 ft), tow plate and 9 m (29.5 ft) long fore runner
Bridle chain	78mm K3, MBL 4500 KN, Max. Bollard Pull 208.5 t
Recovery System	Recovery winch and A-frame with chain on fore-castle deck
Emergency Towing	152 m x 80 mm wire installed in a rack on fore-castle deck, port side
Towing Brackets	3 forward 750 t MBL, 2 aft 300 t MBL

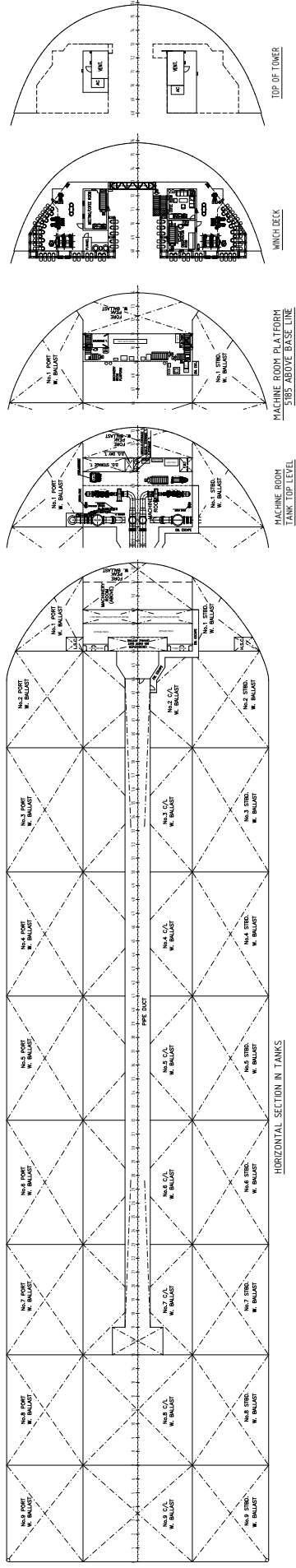
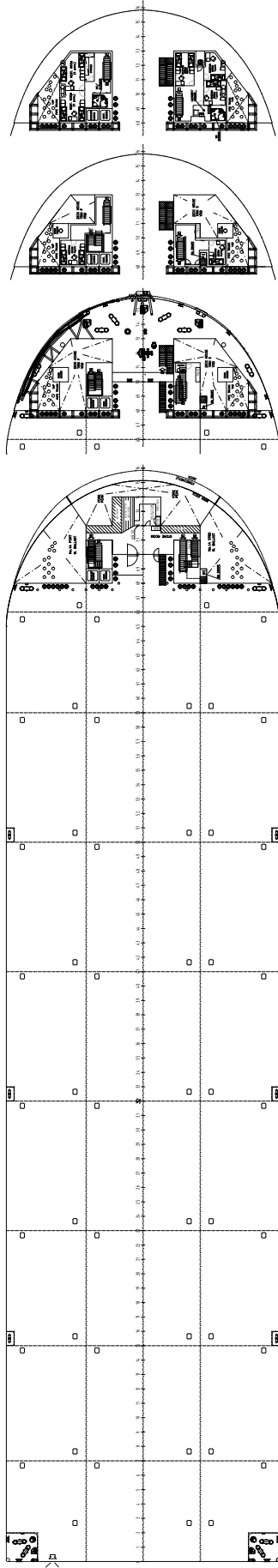
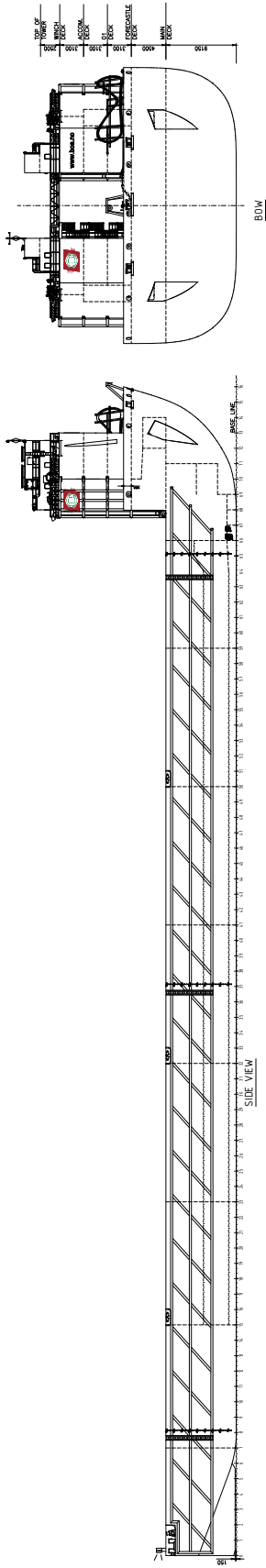
## Accommodation

Accommodations	20 beds
Day Room	1
Meeting Room	1











#### **CORPORATE HEADQUARTERS**

**BOA Management AS**  
Strandveien 43  
7067 Trondheim  
Norway  
+47 73 99 11 99  
chartering@boa.no

[www.boa.no](http://www.boa.no)

Every effort has been made to ensure that all information contained in this brochure is accurate and up-to-date, however all specifications are subject to change without notice and should be verified. Boa accepts no liability or responsibility for any action taken based on the information presented in this brochure. Boa encourages interested parties to verify the contents of this brochure when in doubt.