



BOA



- Submersible to 8 m forward / 12 m aft above deck
- Launching of jackets up to 7,800 t
- Heavy cargo up to 24,600 t
- Voluminous cargo up to 4,690 m³
- Extreme deck strength of 31.5 t/m²

BOABARGE 34

Semi Submersible Heavy Lift and Launching
Cargo Barge



BOABARGE 34

General Information

Vessel's Name	BOABARGE 34
Flag	Norwegian, NOR
Port of Registry	Trondheim
Call sign	LG4414
Class Society	DNV
Class Notations	@1A1 Barge for Deck Cargo (DK+)
Year Built	2013
Builder	PRC
Place Built	PRC
Owner	BOA Barges AS
Manager	BOA Management AS

Dimensions

Length, Overall	140 m (459 ft)
Breadth, Moulded	36 m (118 ft)
Depth, Moulded	8.54 m (28 ft)
Draught, Loaded	6.32 m (20.7 ft)
Web Frame Spacing	2 m (6.6 ft)
Long. Stiffener Spacing	0.61 m (2.0 ft)
Gross Tonnage	12,303
Net Tonnage	3,690

Cargo Capacities

Deadweight (T = 6.920 m)	24,600 t
Deck Space	4,690 m ²
Deck Strength	31.5 t/m ²
Launching Capacity	up to 5,000 t jacket

Submerging Depths

Max Submerging Depth Fwd	16.5 m above BL (8 m above deck)
Max Submerging Depth Aft	20.5 m above BL (12 m above deck)
Grounding	Barge can be submerged by grounding the stern on the sea bed

2 additional floating tanks for free floating submerging operations

Tank Capacities

Ballast Tanks (total capacity)	37,750 m ³
Bilge Tanks (total)	34.3 m ³
Sewage (total)	7.8 m ³
Fresh Water	15.2 m ³
Fuel (total)	44.3 m ³
Lub. Oil Store	0.65 m ³
Hydr. Oil Store	1.3 m ³
Misc. Oil Store	0.65 m ³

Ballast System

Ballast Pumps (diesel driven)	2 x 3.000 m ³ /hr
Ballast Pumps (electrical driven)	1 x 750 m ³ /hr
Service Pump (electrical driven)	400 m ³ /hr
Ballast Ejector	250 m ³ /hr
Ballast Tanks	27 x ballast tanks, all located in pontoon

Remote operated pumps, valves and sounding system from control room

Power Supply

Main Generators	2 x 269 kVA (2 x 345 kW), 440 V, 60 Hz powered by Caterpillar diesel engines
Work Generator	1 x 145 kVA (1 x 129 kW), 440V, 60 Hz powered by Caterpillar diesel engine
Harbour Generator	1 x 22 kVA (1x 18 kW), 440V, 60 Hz powered by Hatz diesel engine

Anchor & Mooring Equipment

Anchor Winch	1 x hydraulic winch
	1 x hydraulically operated retrieving winch with warping head on top of breakwater between deck houses forward. Pulling force 12 tonnes
Work winches	2 x double drum on winch deck
Rope capacities	
Anchor	1 HHP Anchor, weight 4500 kg. 328 m of 58 mm dia. NVK3 chain
Capstans	3 x 12 t pull
Bollards	Size 315/500

Towing Equipment

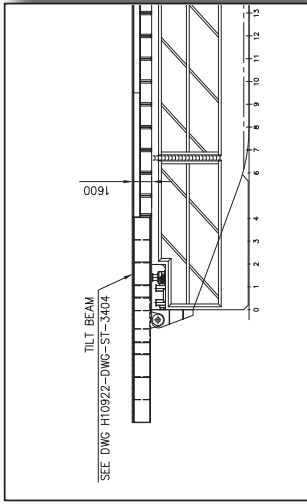
Towing Bridle	Each legs 20 m, tow plate and 9 m long fore runner
Emergency Towing	1 x Smit bracket, breaking load 500 tonnes 5 m of 66 mm dia. chain, MBL 330 tonnes, 130 m of 74 mm dia. wire running along port side of barge, MBL 3365 kN
Recovery System	Recovery winch A-frame with chain on main deck forward
Towing Brackets	3 forward 500 t

Accommodation

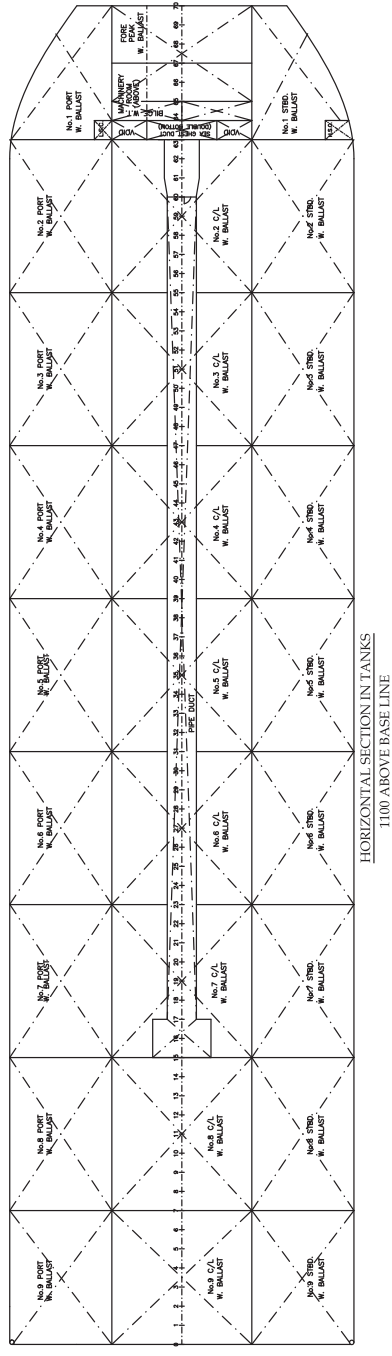
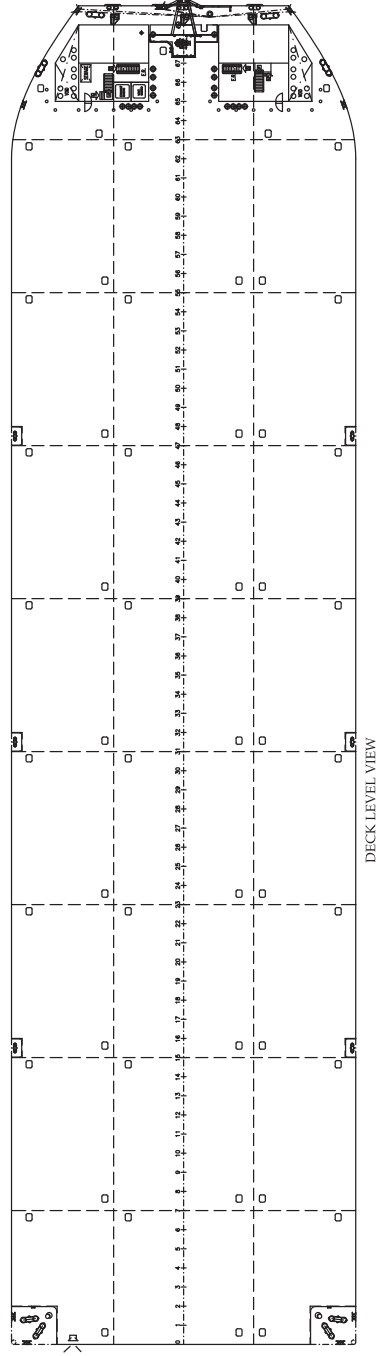
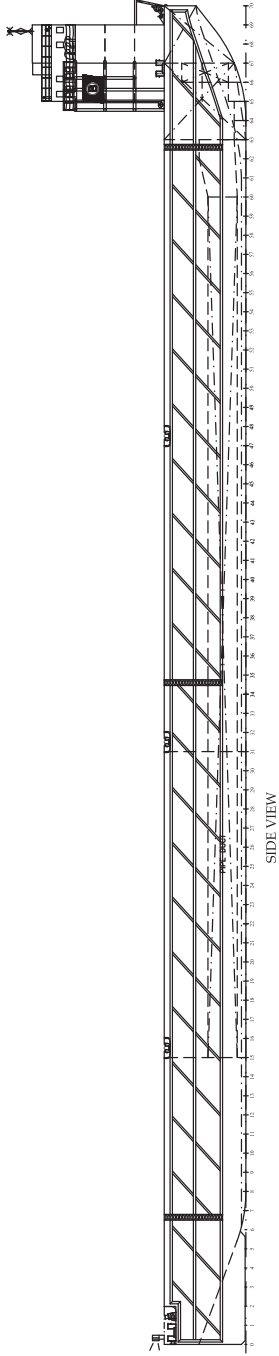
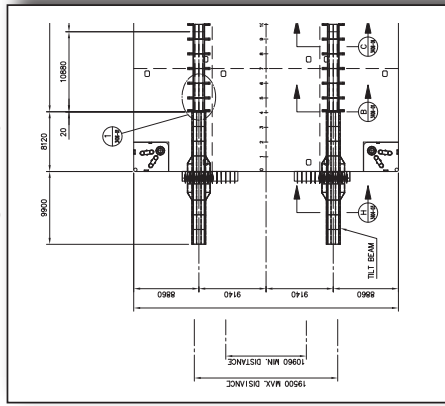
Accommodations	14 beds
Day room	1
Meeting room	1

BOABarge 34 only.
 Capability of launching 7,800mt Jackets

Depending on jacket configuration.



BOABarge 34 only.





CORPORATE HEADQUARTERS

BOA Management AS
Strandveien 43
7067 Trondheim
Norway
+47 73 99 11 99
chartering@boa.no

www.boa.no