

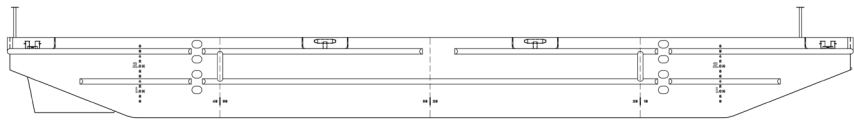


BOA

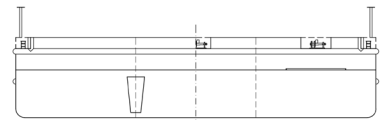


BOABARGE 49 / BOABARGE 50

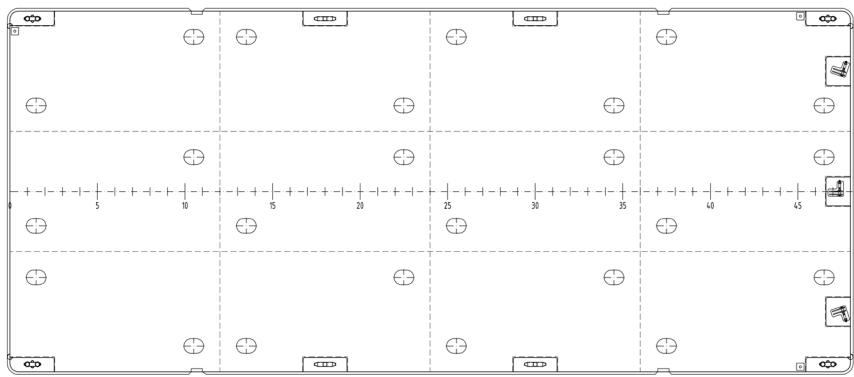
Heavy Deck Cargo Barge



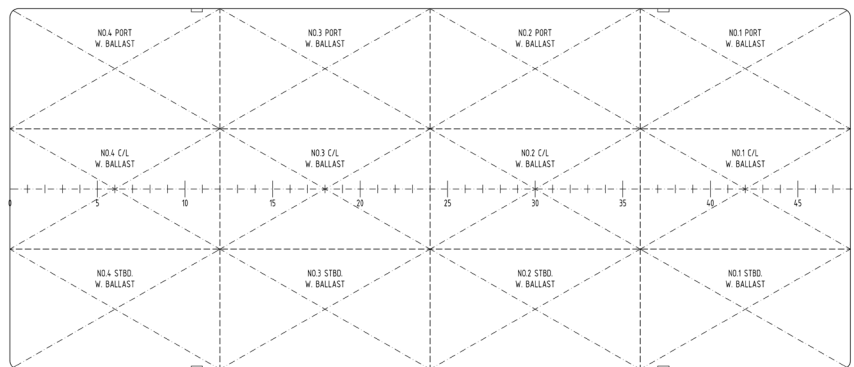
AP 0 5 10 15 20 25 30 35 40 45 FP
SIDE VIEW



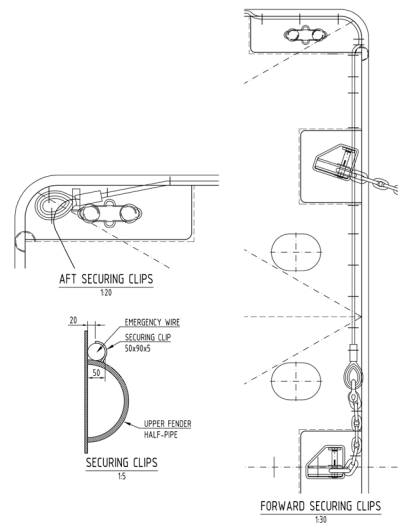
AFT-VIEW FORWARD VIEW
TRANSVERSE SECTION



MAIN DECK



HORIZONTAL SECTIONS IN TANKS



FORWARD SECURING CLIPS
130

General Information	
Vessel's name	BOABARGE 49 BOABARGE 50
Signal Letters	BB49: LG7698 BB50: LG7699
Owner	BB49: T.A.Kittilsen Shipping AS, BB50: Boa Tugs AS
Manager	BB49: T.A.Kittilsen Shipping AS, BB50: Boa Offshore AS
Type	Heavy Deck Cargo Barge
Year built	2014
Builder	Nanjing Wujiazui Shipbuilding Co. Ltd. Nanjing, China

Classification & Flag	
Class society	DNV
Class notation	DNV +1A1, Barge
Port of registry	Trondheim
Flag	Norway

Tonnage	
Deadweight	900 t
Gross tonnage	372
Net tonnage	111

Main Dimensions	
Length, o.a.	33,80 m
Length, p.p.	33,60 m
Breadth, moulded	14,40 m
Depth, moulded	3,20 m
Frame spacing	0,70 m
Draught loaded	2,61 m
Draught lightship	0,59 m
Lightship weight	230,61 t
Deck area	480 m ²
Deck strength	10 t/m ²

Towing and Mooring Equipment	
Bollards	8 x double recessed (NS 2584, size 160)
Fair leads	3 x (NS 2588, size 300 x 200)
Smith brackets	3 x (breaking load 150 tonnes)
Main and emergency towing arrangement designed for 150 tonnes breaking load.	

Navigational Equipment	
The barge is equipped with navigational lights and daylight signals according to flag state rules.	



Head Office
Strandveien 43
N-7042 Trondheim
Norway

+47 73 99 11 99 | office@boa.no | www.boa.no

chartering@boa.no